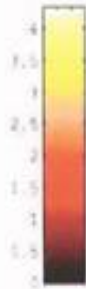
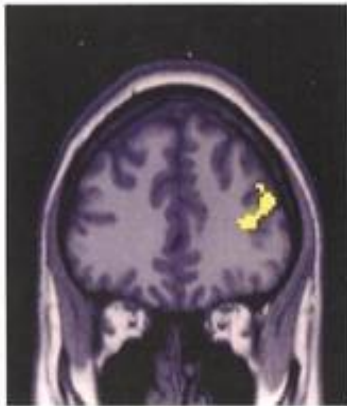


## MRI Brain Scans

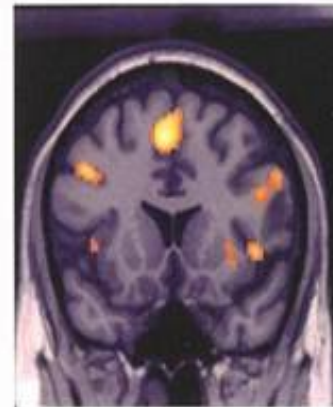
show that MARIJUANA  
affects the brain.



Above Images from  
Non-Smoking Subjects

Non Cannabis smoker vs.  
Heavy Cannabis smoker  
brain images during a  
tapping finger on desk test.  
Cannabis smoker requires  
much more brain activity

Lighter color indicates a  
higher intensive



Above Images from  
Heavy Cannabis Smokers

# SAFER THAN ALCOHOL?

- Effects last for hours
- Collect in fat cells
- More teenagers in rehab
- Marijuana withdrawal recognized as psychosis

